



# THE LARGEST

## HOME, CONSTRUCTION & INTERIOR EXHIBITION IN KANDY



13 14 15

MARCH 2026

KANDY CITY CENTRE (KCC)  
KANDY - SRI LANKA





## Welcome to the 2<sup>nd</sup> Edition of BuildFirst Expo – Kandy

Following the remarkable success of the inaugural BuildFirst Expo 2025, we are proud to present the 2<sup>nd</sup> Edition of BuildFirst Expo – the premier platform for Sri Lanka's home, construction, and interior industries.

Held once again in the heart of the Central Province, Kandy – a city celebrated for its rich heritage, natural beauty, and fast-growing urban development – the BuildFirst Expo 2026 will bring together leading brands, innovators, and industry professionals under one roof.

This three-day exhibition will showcase the latest trends, technologies, and solutions in construction, home decor, and interior design. It provides the perfect opportunity for companies to promote their products and services, strengthen brand visibility, build partnerships, and connect directly with thousands of homeowners, builders, and decision-makers.

With Kandy continuing to emerge as a key hub for residential and commercial development, BuildFirst Expo 2026 promises to deliver even greater exposure, innovation, and business growth opportunities for all participants.

Join us at BuildFirst Expo 2026 – Kandy, and be part of shaping the future of Sri Lanka's construction and interior industry.

# About the Event Organizer

BuildFirst Expo is organized by Ceylon Exhibitions & Corporate Services, a leading exhibition and event management company in Sri Lanka. Since its establishment in 2017, the company has successfully organized numerous large-scale exhibitions and corporate events across the country. With a skilled team and deep insight into Sri Lanka's business landscape, Ceylon Exhibitions creates impactful platforms that promote networking, business growth, and brand visibility. Through strategic planning, creativity, and professionalism, the company continues to deliver outstanding, results-driven events that connect industries and audiences effectively.

**Worked with  
2000+  
Exhibitors**

**100+ Successful  
Exhibitions**

**500,000+  
Visitors Visited  
Our Exhibitions**

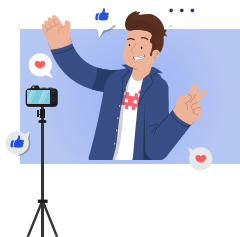
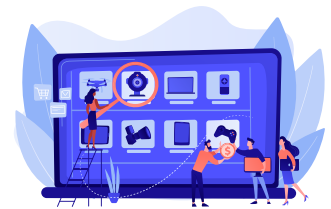
**8+ Years  
in the industry**

**Worked with  
1000+  
Sponsors**

*"More than events,  
We create experiences"*

# Why Exhibit at BuildFirst Expo

- Premier Platform for the Home, Construction & Interior Industry
- Direct Access to a Targeted Audience
- Showcase Your Brands & Products
- B2B & B2C Networking Opportunities
- Live Demonstrations & Product Launches
- Expert Talks, Knowledge Sessions, Media & Marketing Exposure
- Strategic Location – Hill Capital, Sri Lanka



# Visitor Profile

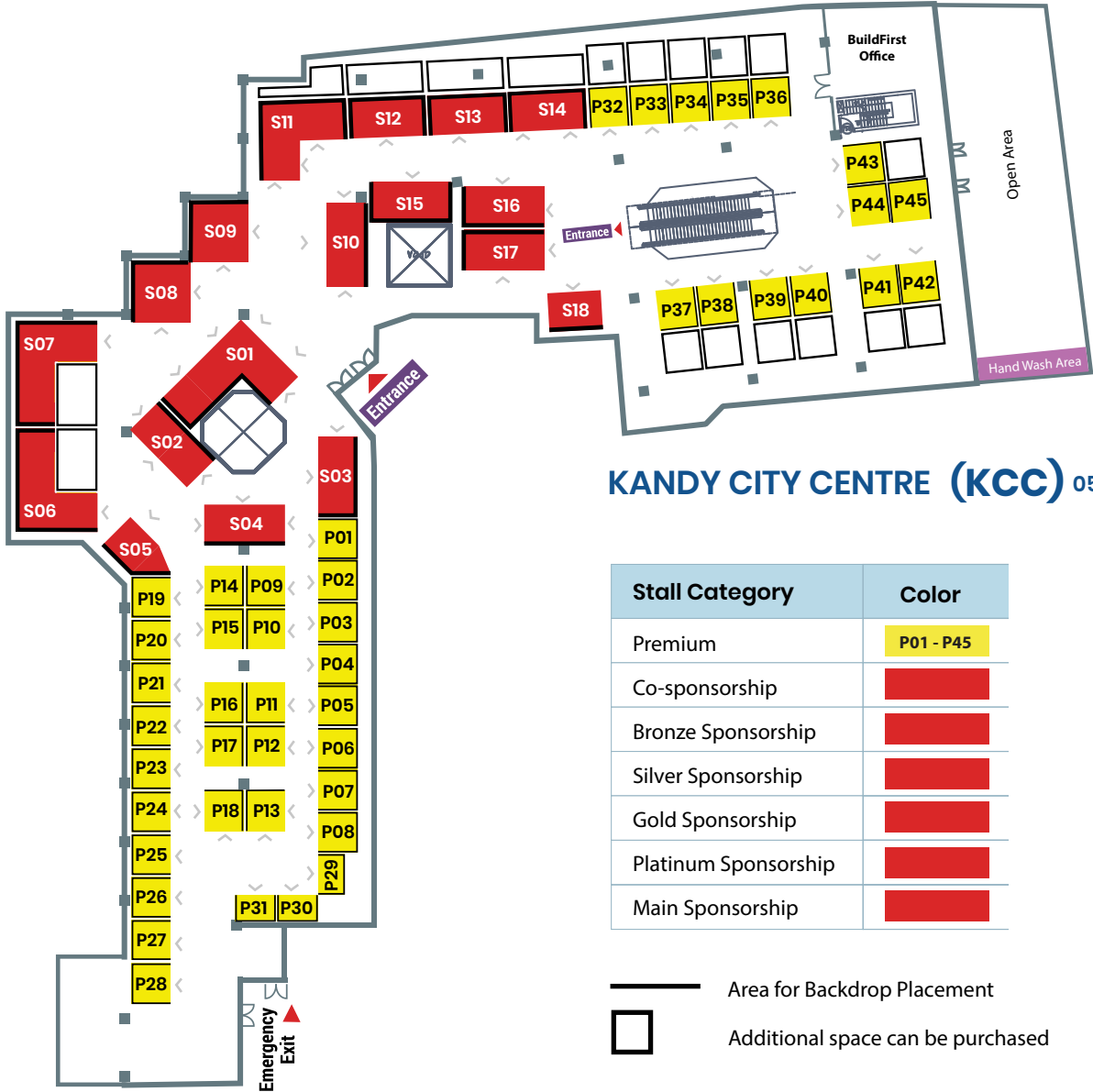
- Home Builders and Contractors
- Homeowners & Developers
- Property Buyers
- Interior Designers and Decorators
- Construction Material Suppliers
- Government Officials and Regulators
- Students and Industry Aspirants
- General Public and Enthusiasts

## Exhibitor Profile

- PROPERTY DEVELOPERS AND REAL ESTATE COMPANIES
- ARCHITECTURAL FIRMS AND CONSULTANTS
- HOME TEXTILES – CURTAINS, CARPETS, AND UPHOLSTERY
- SOLAR PANELS AND POWER SUPPLY SYSTEMS
- INTERIOR DESIGN SOLUTIONS AND SERVICES
- CIVIL ENGINEERING AND STRUCTURAL DESIGN SERVICES
- CEILING DECORATORS
- TIMBER, WOOD, AND ENGINEERED WOOD PRODUCTS
- CEMENT, BRICKS, AND CONCRETE PRODUCTS
- KITCHENS AND WARDROBES
- TILES, GRANITE & FLOORING
- PAINTS, WATERPROOFING, ADHESIVES AND SEALANTS
- ELECTRICAL FITTINGS AND WIRING SOLUTIONS
- WOODEN, ALUMINIUM, AND UPVC DOORS/WINDOWS
- ROOFING, FLOORING, AND WALL MATERIALS
- SMART HOMES & SECURITY SYSTEMS
- LANDSCAPING & OUTDOOR SOLUTIONS
- HOME FURNITURES
- BATHROOM FITTINGS
- SUSTAINABLE & GREEN BUILDING SOLUTIONS
- TOOLS, MACHINERY & EQUIPMENT
- PANTRY CUPBOARDS
- BANKS, FINANCIAL INSTITUTIONS & INSURANCE COMPANIES
- HEATING, VENTILATION & AIR CONDITIONING (HVAC) SYSTEMS
- SAFETY EQUIPMENT AND ACCESSORIES
- AND MANY MORE...



# Floor Plan & Rate Card



**Note:**

- Maximum Height: 8 ft; Extra Space Charges: 50,000 LKR
- Subject to Government Taxes

# Key Benefits of Sponsorship Packages

| Sponsor Category                                                                                          | Main Sponsorship         | Platinum Sponsorship     | Gold Sponsorship         | Silver Sponsorship       | Bronze Sponsorship       | Co-sponsorship           |
|-----------------------------------------------------------------------------------------------------------|--------------------------|--------------------------|--------------------------|--------------------------|--------------------------|--------------------------|
| Prominent exhibit space                                                                                   | Bare Space               | Bare Space               | Bare Space               | Bare Space               | Bare Space               | Bare Space               |
| Your logo on all TV,Printed,Digital, Outdoor & Other Advertising materials                                | ✓                        | ✓                        | ✓                        | ✓                        | ✓                        | ✓                        |
| Your logo on all Venue Branding                                                                           | ✓                        | ✓                        | ✓                        | ✓                        | ✓                        | ✓                        |
| A Special Influencer Video on Social Media                                                                | ✓                        | ✓                        | ✓                        | ✓                        | ✓                        | ✓                        |
| Allocation of space for placing flags in the exhibition venue                                             | 30 Flags                 | 25 Flags                 | 20 Flags                 | 15 Flags                 | 10 Flags                 | 05 Flags                 |
| Audio announcements from the PA (Public Address) system during the days of the exhibition at the premises | 60 announcements per day | 50 announcements per day | 40 announcements per day | 30 announcements per day | 20 announcements per day | 10 announcements per day |
| Direction floor stickers will be provided with name & logo                                                | ✓                        | ✓                        | ✓                        | ✗                        | ✗                        | ✗                        |
| A live discussion on official television partner prior to the exhibition                                  | ✓                        | ✗                        | ✗                        | ✗                        | ✗                        | ✗                        |
| Speech at Inauguration Ceremony                                                                           | ✓                        | ✗                        | ✗                        | ✗                        | ✗                        | ✗                        |



# Our Partners From Previous Exhibition



# Highlights from the Previous Exhibition





**CONTACT US FOR SPONSORSHIP & STALL RESERVATIONS**

  **077 00 38 000**

**077 51 50 575 | 0777 42 80 83**



**CEYLON EXHIBITIONS & CORPORATE SERVICES**

City Office

2-G18, Bandaranaike Memorial International Conference Hall (BMICH),  
Buddhaloka Mawatha, Colombo 07 - Sri Lanka

Corporate Office

169/2/3, Colombo Road, Pilimathalawa,  
Kandy - Sri Lanka

Scan here  
for  
more details

